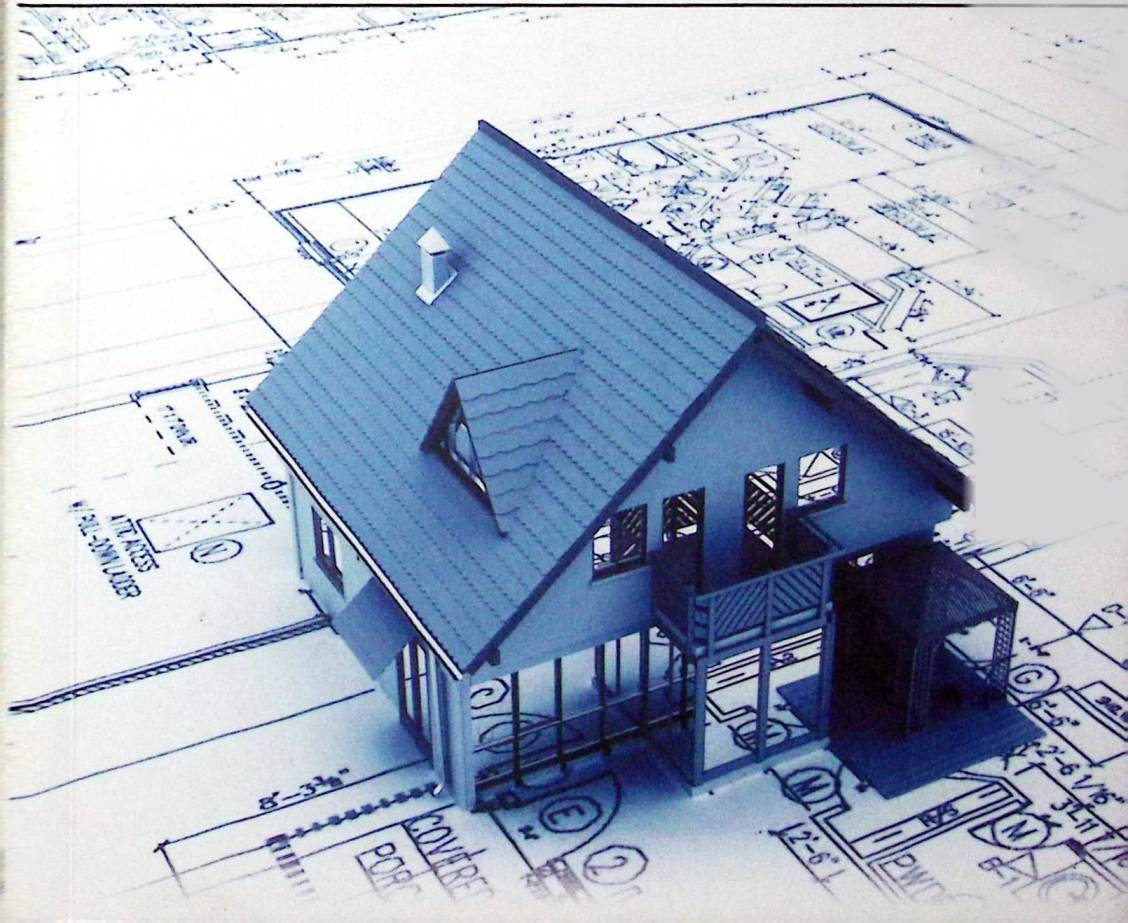




DRAWING FOR ENGINEERING

Paul Smith • Andy Wilkinson



DRAWING FOR ENGINEERING

**Paul Smith
Andy Wilkinson**

ETP
ED - TECH PRESS
www.edtechpress.co.uk

Table of contents

Preface	viii
Unit 1 Drawing equipment	1
Study Objectives.....	1
1 Introduction	1
2 Drawing equipment	1
2.1 Drawing paper and its application	2
2.2 Drawing board and its application	3
2.3 T-square.....	3
2.4 Set squares or triangles and their application.....	5
2.5 Masking tape.....	6
2.6 Pencils and their application	7
2.7 Eraser (rubber).....	10
2.8 Erasing shield.....	10
2.9 Adjustable compass or large bow and its application	10
2.10 Sandpaper pad or file	12
2.11 Dust cloth or brush	12
2.12 Other instruments	12
2.13 Scale rulers (metric)	12
3 Essential do's and don'ts of neatness in drawing.....	14
4 Summary.....	15
Self-evaluation	15
Answers	16
Unit 2 Application of the alphabet of lines.....	19
Study objectives.....	19
1 Introduction.....	19
2 Application of the alphabet of lines	21
2.1 Outlines or object lines (line type A).....	22
2.2 Centre lines (line type G1)	23
2.3 Dimension lines (line type B2).....	24
2.4 Extension lines for dimensions (line type B3).....	24
2.5 Leader lines (line type B4)	25
2.6 Construction lines (line type BB1)	25
2.7 Projection lines (line type B).....	26
2.8 Guide lines (line type BB2)	26

2.9	Dashed lines to show hidden detail (Hidden detail lines) (line types E and F)	26
2.10	Hatched lines or section lines (line type B5)	27
2.11	Other lines	28
3	Summary	30
	Self-evaluation	30
	Answers	31
Unit 3	Lettering, figuring and dimensioning	32
	Study objectives	32
1	Introduction	32
2	Lettering, figuring and dimensioning in drawing	33
2.1	Preparation of the drawing sheet	33
2.2	Lettering and figuring	34
2.3	Positions of the title and scale relative to each other	35
2.4	Positioning of the title and scale on the drawing sheet	35
2.5	Dimensioning on a working drawing	37
2.6	Different types of dimensions on a working drawing	41
2.7	Tolerance dimensions	49
2.8	Dimensioning keyways	49
2.9	Leaders	50
2.10	Machining symbols	51
3	Summary	52
	Self-evaluation	53
	Answers	56
Unit 4	Freehand sketching	58
	Study objectives	58
1	Introduction	58
2	Real-life (field) sketching and design sketching	59
3	Freehand sketching	60
3.1	Sketching horizontal lines	60
3.2	Sketching vertical lines	60
3.3	Sketching slanted lines	61
3.4	Sketching curved figures and geometric shapes	61
3.5	Sketching irregular shapes	68
3.6	Isometric sketching	70
3.7	Oblique sketching	73
4	Summary	77
	Self-evaluation	78

Unit 5	Constructions	80
	Study objectives	80
	1 Introduction	80
	2 Geometrical constructions	81
	2.1 Bisecting lines and angles	81
	2.2 Perpendiculars	82
	2.3 Parallel lines	84
	2.4 Setting out angles with the aid of set squares	86
	2.5 Hexagons (Six-sided figures)	89
	2.6 Octagons (Eight-sided figures)	91
	2.7 Joining straight lines with arcs using a compass	91
	2.8 An ellipse	95
	3 Summary	99
	Self-evaluation	99
Unit 6	Layout of drawings	101
	Study objectives	101
	1 Introduction	101
	2 Layout of drawings	103
	2.1 First-angle orthographic projection	103
	2.2 Third-angle orthographic projection	104
	2.3 Projecting a third view	107
	2.4 Drawing step-method for laying out drawings	108
	2.5 Isometric drawings	109
	2.6 Oblique drawings	113
	2.7 Projections of prisms and pyramids	115
	2.8 Developments	117
	2.9 Interpenetrations	123
	3 Summary	126
	Self-evaluation	127
	Answers	127
Unit 7	Sectioning	130
	Study objectives	130
	1 Introduction	130
	2 Sectioning	131
	2.1 Terminology	131
	2.2 Sectional cutting planes	133
	2.3 Various aspects of sectioning	134
	2.4 How to draw a sectional view	138
	2.5 Sectional detail drawings	140

3	Summary.....	14
	Self-evaluation.....	14
	Answers.....	14
Unit 8	Conventional representations.....	145
	Study objectives.....	145
1	Introduction.....	145
2	Holes and fasteners.....	145
2.1	Representation of a drilled hole.....	145
2.2	Representation of a tapped hole (threaded hole).....	146
2.3	Construction of a hexagonal nut.....	147
2.4	Representation of a hexagonal head bolt.....	148
2.5	Representation of a stud.....	149
2.6	Representation of a stud assembly.....	149
3	Springs.....	150
3.1	Representation of springs.....	150
4	Breaks.....	151
5	Welded joints.....	153
5.1	Types of welded joints.....	153
5.2	Representation of welds.....	154
5.3	Supplementary symbols.....	156
6	Summary.....	157
	Self-evaluation.....	157
	Answers.....	158
Unit 9	Fasteners.....	161
	Study objectives.....	161
1	Introduction.....	161
2	Types of threaded fasteners.....	161
2.1	Bolt heads.....	162
2.2	Screw heads.....	163
3	Locking devices.....	165
4	Riveted joints.....	167
4.1	Single or double rivet joints.....	168
5	Summary.....	170
	Self-evaluation.....	171
	Answers.....	172
Unit 10	Assembly drawings.....	173
	Study objectives.....	173
1	Introduction.....	173
2	Hatching sectional drawings.....	174

3	Sections of sectional drawings	174
4	A typical assembly drawing	178
5	Item numbers	180
6	Parts list	180
7	How to start an assembly drawing	181
8	Summary	186
	Self-evaluation	186
	Answers	186
Unit 11	Pipe drawings (chemical)	189
	Study objectives	189
1	Introduction	189
2	Kinds of piping	189
3	Pipe joints and fittings	190
4	Pipe drawings	192
5	Pipe drawing symbols	194
6	Summary	196
	Self-evaluation	197
	Answers	197
Appendix	Terms, abbreviations and symbols	199